



AKVA

PASSION FOR TECHNOLOGIES



PROVEtech:VA VEHICLE APPLICATION

FLEXIBLE MEASUREMENT DATA ACQUISITION IN TEST VEHICLES AND LABORATORY

Since the early 2000s, the range of functions and complexity of automotive electronics has increased rapidly. The main reason for this development is new driver assistance systems that make the modern car safer and more comfortable. In this context, the number, wcomplexity and functionality of the ECUs involved are also increasing. For the acquisition of measurement data from these systems, a reliable and powerful measurement technology system is required - both in the laboratory and on the road, sometimes under extreme environmental conditions.

With PROVEtech:VA we offer a flexible and versatile solution for the time synchronous acquisition of all relevant data in automotive development and testing. The system, which consists of hardware and software components, reliably records, visualizes and outputs measurement data in the desired target format.

In addition to common bus systems and analog quantities, PROVEtech:VA also supports new technologies like Automotive Ethernet. Additional information such as video images, audio comments and location information can also be recorded. Within the scope of projects, customer specific components can also be integrated into the system.

Recording can be triggered by a button, when a predefined event occurs or continuously. The length and extent of the measurement can be precisely defined. A finished recording can be stored both locally and remotely on a secured web space.

OUR ADDED VALUE

- Cost effective hardware and software components
- Integration of customer specific components
- Support during system planning, configuration and installation
- Instruction and training on site
- Phone hotline and email support

APPLICATION RANGE

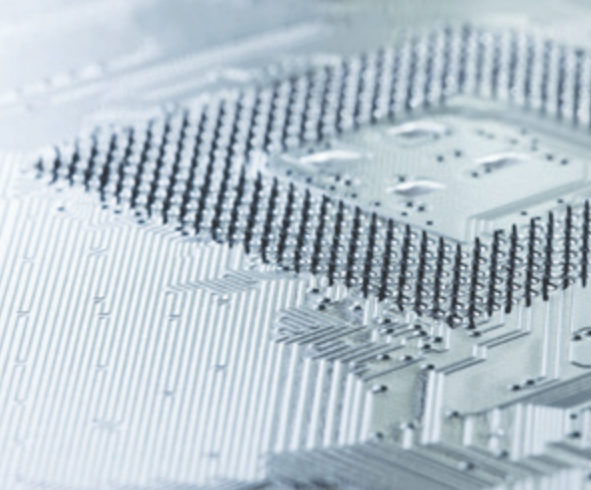
- On prototype cars during development and endurance runs
- On test bench in laboratory during component and system tests (also in combination with PROVEtech:TA)

SUPPORTED TECHNOLOGIES

- Automotive Buses: CAN, CAN FD, FlexRay, LIN, Automotive Ethernet
- Automotive Protocols: XCP, CCP, J1939

SUPPORTED FILE FORMATS

- Vector MDF and ASC
- Mathworks MATLAB
- National Instruments DIAdem
- EB Assist ADTF
- ASAM ATFX



CONTROL & CONFIGURATION

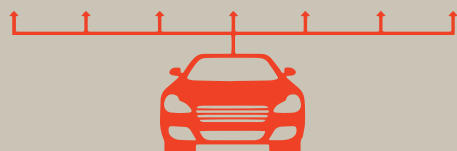


VISUALIZATION & ANALYSIS



PROVEtech:va

CAN FLEXRAY LIN AUTOMOTIVE ETHERNET XCP ANALOG VIDEO



ALL PROVEtech:VA COMPONENTS AT A GLANCE

HIGH PERFORMANCE DATALOGGER AS A CENTRAL COMPONENT

- Individually tailored to your needs
- Acquisition of measurement data from bus systems, control units and analog sensors
- Capture of metadata such as video images, audio comments and location information
- Fast internet connection via LTE for the transfer of measurement data to secure web space
- Controlled switching on and off controlled via CAN or ignition

USER-FRIENDLY CONFIGURATION AND CONTROL

- PROVEtech:VA Control as a user interface to the datalogger
- Configuration of the datalogger channels
- Download of recorded measurement files
- Updating of the datalogger software
- Conversion of measurement files to the desired target format

SIMPLE ANALYSIS OF RECORDINGS

- Clear presentation of recorded measurement data with PROVEtech:VA DataView
- Various numerical and graphical views
- Playback of meta information such as video images and audio comments

PROVIDE YOUR RECORDINGS WITH ADDITIONAL INFORMATION

- Tagging of meta information via tablet app during ongoing measurement
- Simple user handling, optimized for touch screens
- Individual design of the user interface possible

OVERVIEW OF ALL SYSTEMS IN USE

- Available in the browser at any time with PROVEtech:VA Fleet Dashboard
- Status of all systems at a glance
- Location information with map view
- Exchange of datalogger configuration
- Email notification in case of error

